

KNYSNA HIGH SCHOOL



sedert 1929 since

PROSPECTUS 2020

GENERAL INFORMATION

KNYSNA HIGH SCHOOL

20 Long Street
P.O. Box 437
Knysna 6570

Telephone:

+27 (0)44 382 2137/8

Fax:

+27 (0)44 382 0558

E-MAIL:

admin@knysnahigh.co.za

Principal:

Mr M Mosdell

Deputy Principal:

Mrs R van Staden
Miss D Kennedy

Secretaries:

General: Ms A Olivier / Mrs A Victor
Finances: Mrs L Vokes / Mrs L van Senus

Sports Co-ordinator:

Mr K Groome

Caretaker:

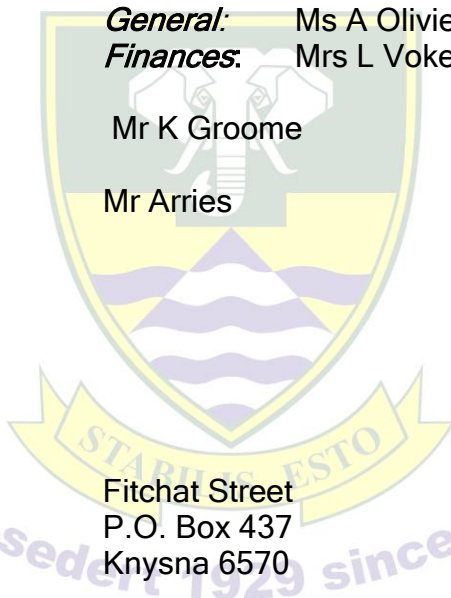
Mr Arries

VOLHARD HOSTEL

Fitchat Street
P.O. Box 437
Knysna 6570

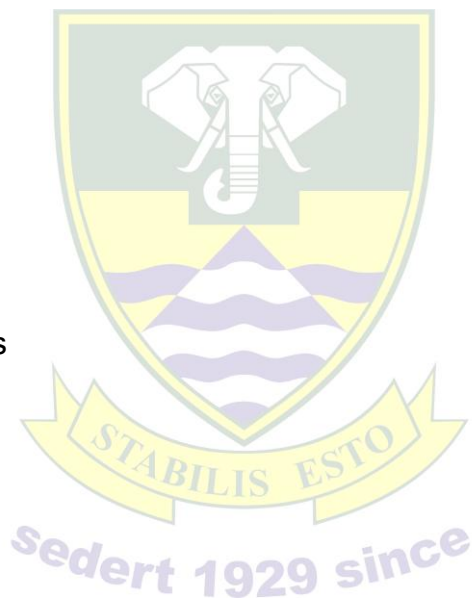
Telephone:

+27 (0)44 382 1327



CONTENTS

	<i>Page no.</i>
1. Letter from Principal	4
2. Vision, Mission and Values	5
3. History of Knysna High School	5
4. Enrolment	5/6
5. Finances	7
6. Attendance	7
7. Volhard Hostel	7
8. Code of Conduct	7
9. i) Subject choice Gr 8 - 9	7
ii) Subject choice Gr 10 - 12	8
10. Extra-mural activities	8
i) Societies and clubs	8
ii) Sport	8
11. School uniform	8/10
12. Additional information	10
13. School song	10



1. LETTER FROM PRINCIPAL

Dear Parents

Knysna High, situated in one of the most beautiful parts of our country, offers home to both English and Afrikaans-speaking learners. In Grade 8 and Grade 9, learners are separated into English and Afrikaans classes. However, in Grades 10-12, all lessons are dual-medium (English/Afrikaans).

We strive to provide an encompassing, balanced education programme which gives every learner the opportunity to develop his/her abilities to the fullest. A wide range of subjects and a large selection of sporting and cultural activities provide for the mental, physical and spiritual development of our children. The school is fortunate to have fully-qualified teachers whose learners achieve excellent results. We also have more than sufficient facilities to make provision for our extended extra-mural programme.

We believe in the maintenance of discipline and the development of a healthy lifestyle. Emphasis is placed on the behaviour of learners both inside and outside the school environment. The behaviour which we expect from each child is summarised in the code of conduct, and after a learner has enrolled, he/she is expected to know and obey the code of conduct.

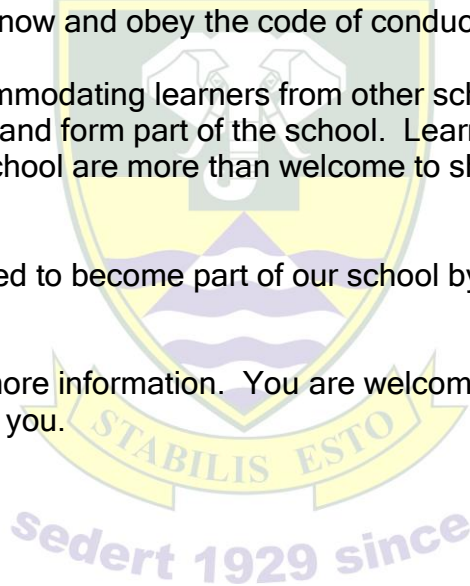
As Knysna High is used to accommodating learners from other schools and provinces, we have found that learners soon feel welcome and form part of the school. Learners who identify with the traditions, ideals and expectations of the school are more than welcome to share in our happy school environment.

As parent, you are cordially invited to become part of our school by joining in the activities of the Governing Body and the PTA.

You can contact the school for more information. You are welcome to make an appointment with the principal. We would like to meet you.

Yours faithfully

Mr M Mosdell
Principal



2. VISION, MISSION AND VALUES

VISION: KHS learners, staff and parents embrace holistic learning in a caring, supportive and accountable environment in order to adapt in a rapidly changing society and to serve the community.

MISSION: To cherish and lead every student; to give him/her the opportunity to fulfil his/her potential in a professional and safe environment that he/she is proud of. To value diversity and to contribute to the development of a well-balanced individual who has confidence, a vision of the future and a belief in himself/herself and the world around him/her.

VALUES:

1. Respect
2. Integrity
3. Pride
4. Trust
5. Loyalty
6. Caring

3. HISTORY

The history of Knysna High dates back to the last century when it was known as the Knysna Public School and functioned as a junior school only. The old school building (on the present site) came into use on 16 October 1916 and on 1 January 1929 obtained the status of a high school. The official opening of Knysna High took place on 28 January 1929. Subsequently numerous extensions have taken place. The present building, erected around the original building, was occupied at the end of 1968.

At present, the school consists of a modern building with all the essential rooms. These include: well-equipped laboratories; a Consumer Studies classroom; a school hall; and two computer rooms.

Originally tuition was in English. In 1936 Afrikaans was gradually introduced as an alternative language of tuition, and only in the early 1940s did Knysna High become a dual-medium school.

The colourful history of the school can be traced from the days when it provided education mainly to the English-speaking village children. Later, with the addition of the hostels, provision was made for children from the farming community and the forestry sector. Today it fulfils the task of a typical town school in a rapidly- developing area.

4. ENROLMENT

4.1 The school is essentially Christian in character and parents must be fully aware of the implications of this fact.

4.2 All tuition in this school takes place through the mediums of English and Afrikaans.

4.3 Proof of age must be provided upon admission. Learners will only be allowed into a certain grade if their age upon the date of admission does not differ from the normally acceptable age for that grade by more than two years.

The normal acceptable age for each grade is:

Grade 8 :	14 years
Grade 9 :	15 years
Grade 10:	16 years
Grade 11:	17 years
Grade 12:	18 years

4.4 Proof of a previous school record, a portfolio for each of the learner's subjects and a certificate of transfer must be provided, as well as the reason for the transfer. Failure on the part of the parent to disclose any relevant information in this regard shall give the Governing Body the right to reverse its decision to admit a learner. In addition, the principal, in consultation with the Governing Body, may require any learner to pass an entrance examination before admission to the school is granted.

4.5 Admissions must be in accordance with the subject choice as set out on page 8 of this prospectus.

4.6 Learners will only be admitted to the school if the principal, in council with the Governing Body, is convinced that such a learner will benefit from admission to Knysna High.

4.7 A learner may only be admitted to a certain grade or class if the number of learners in the grade/subject does not exceed its prescribed or desirable number, and if this can take place within reasonable, available physical facilities.

4.8 Parents and learners must acquaint themselves with the culture, traditions, customs, conventions and ethical values of Knysna High and respect these.

4.9 Only public holidays stipulated by law will be recognised. Admission will take place on the grounds that a learner may not be absent on any other day, unless the reasons offered are accepted by the Governing Body as valid reasons.

4.10 Learners will only be considered for admission after the parents have signed an undertaking:

- i. To accept the code of conduct and admissions policy of the school and see that their children adhere to them.
- ii. To pay school fees on a monthly/quarterly/annual basis in advance unless a different arrangement has been made with the principal and approved by the Governing Body.

4.11 General

Parents are responsible for buying work books and stationery as specified annually by the school.

5. FINANCES

The following fees are payable:

- i) School fees
- ii) Hostel fees (if applicable)

As these fees are adjusted annually, they are available from the principal on request only.

6. ATTENDANCE

The attendance of the learners is checked daily. No appointments should be made during school time.

If a learner has been absent, the parent must write a letter to the school. When a learner is absent during examinations, a valid medical certificate must be presented within 48 hours.

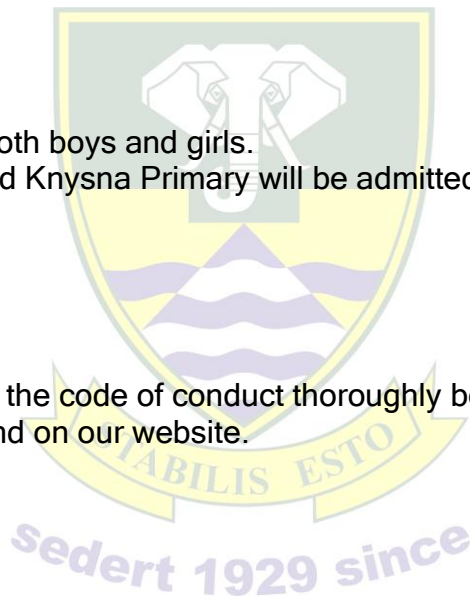
7. HOSTEL

Volhard hostel accommodates both boys and girls.

Only learners of Knysna High and Knysna Primary will be admitted to the school hostel.

8. CODE OF CONDUCT

Prospective parents should read the code of conduct thoroughly before the start of the New Year. A copy is available on request and on our website.



9. SUBJECT CHOICE

SENIOR PHASE: GRADE 8/9

1. Languages (English/Afrikaans)
2. Mathematics
3. Social Sciences
4. Economic Management Sciences
5. Life Orientation
6. Creative Arts
7. Natural Sciences
8. Technology

FURTHER EDUCATION AND TRAINING: FET (GRADE 10 - 12)

Compulsory - Two languages	English / Afrikaans Home language Afrikaans/English First Additional language
Compulsory	Life Orientation
Choose one (compulsory)	Mathematics Mathematical literacy
<i>CHOOSE FROM EACH OF GROUPS 1 - 3</i>	
Group 1	Accounting Consumer Studies Visual Arts Geography
Group 2	Life Sciences History Computer Application Technology (CAT)
Group 3	Physical Sciences Life Sciences Business Studies

10. EXTRAMURAL ACTIVITIES

10.1 Societies and Clubs

CIA, Debating and Public Speaking, Choir, School Newspaper, Interact, Chess.

10.2 Sport

Athletics, Tennis, Swimming, Hockey (boys and girls), Squash (boys and girls)

Rugby, Cricket, Soccer (boys and girls) and Netball.

Participation is of importance for the child. Learners should participate in one summer and one winter sport and should join one society or club. The sports programme is available from the Sports Co-ordinator.

11 .SCHOOL UNIFORM

Official school uniforms and sportswear are available from Norseman, Main Street, Knysna. The school has a second-hand clothing shop.

BOYS: SUMMER - Terms 1 and 4

Belt	Black (no motif on the belt). No extravagant buckles.
Trousers	Beige "Tuskies" chino pants.
Socks	Grey
Shoes	Black lace-up shoes without any motif (not boots). NB: The soles must be of standard thickness. Soles that leave black marks on the floors must be avoided. Deviations will only be allowed on medical grounds.
Shirt	White open-necked shirts with short sleeves, with the blue school badge. Shirts must be neatly tucked into trousers. NB: Only a white T-shirt (without designs) will be allowed under the shirt.
Blazer	Official school blazer with badge. (Compulsory during assemblies).
Jersey	Navy blue long-sleeved school jersey with school badge.
Pull-over	Sleeveless jersey.

BOYS: WINTER - Terms 2 and 3

Shirt	White neck-tie, long-sleeved shirts and a school tie
Jersey	Navy blue long-sleeved school jersey with school badge. (Grade 12 learners wear their white jerseys or pullovers). Sleeveless navy blue jersey - with long-sleeved shirt.
Blazer	Official school blazer with badge.(Compulsory during assemblies).
Trousers	Beige "Tuskies" chino pants.
Socks	Grey.
Shoes	The same as for summer
Scarf	Only the official school scarf will be allowed. A tie is still compulsory with the scarf.
Beanie	Only the official school beanie will be allowed
Gloves	Black

GIRLS: SUMMER - Terms 1 and 4

Dress	Official school dress, white short-sleeved shirt. Length: 12 cm above the knee measured from the ground whilst kneeling.
Trousers	Grey long trousers, the same length as the standard long pants with neatly stitched hems.
Shoes	Black lace-up shoes or black shoes with strap over foot
Socks	Short white socks, without logos, motifs or stripes. No "secret socks".
Blazer	Official school blazer with badge. (Compulsory during assemblies).
Jersey	Navy blue long-sleeved school jersey with school badge.
Pull-over	Sleeveless navy blue jersey. May be worn without a blazer.

GIRLS: WINTER - Term 2 and 3

Dress and Shirt	Official school dress, white long-sleeved shirt. Length: 12cm above the knee measured from the ground whilst kneeling. School tie.
Long pants	Grey long trousers, the same length as the standard long pants with neatly stitched hems.
Stockings	Long black stockings (not thick knitted, but “winter woollies”).
Socks	Short white socks, without logos, motifs or stripes. No “secret socks”.
Shoes	The same as for summer.
Jersey	Navy blue long-sleeved school jersey with school badge. (Grade 12 learners wear their white jerseys or pullovers).
Pull-over	Sleeveless jersey - with long-sleeved shirt.
Scarf	Only the official school scarf will be allowed. A tie is compulsory with the scarf
Blazer	Official school blazer with badge. (Compulsory during assemblies).
Beanie	Only the official school beanie will be allowed
Gloves	Black

Note:

- A navy-blue school blazer with blue school badge is compulsory for all learners.
- Learners who are involved in the annual prize giving have to wear winter uniform.
- Each sports team has its own characteristic kit that must be worn for matches.
- School uniform or relevant sportswear, must be worn before and after matches.
- School uniforms must be worn during school hours and at certain organised functions (as specified by the principal).

12. FURTHER INFORMATION

As the prospectus provides limited information, you are welcome to contact the school for further information or visit our website www.knysnahigh.co.za

13. SCHOOL SONG

*Waar land en see mekaar ontmoet.
En berg en bos mekaar begroet,
word ons met kennis toegerus
en van ons roeping bewus.*

*Though cultures may well differ
In our school we all are one.
In God we trust to help us all.
To always live up to our call.
Stabilis Esto.
By this we will abide
For this will make us strong.
To honour you all along
Knysna High, our school!*